



**SCOTTISHPOWER
RENEWABLES**

East Anglia ONE North and East Anglia TWO Offshore Windfarms

Viewpoint Photomontage with Potential National Grid Extension Bays:

**Figure 29.17 Update Viewpoint 5
Public Rights of Way, near Moor Farm**

Applicants: East Anglia ONE North Limited and East Anglia TWO Limited

Document Reference: ExA.AS-31.D8.V1_02

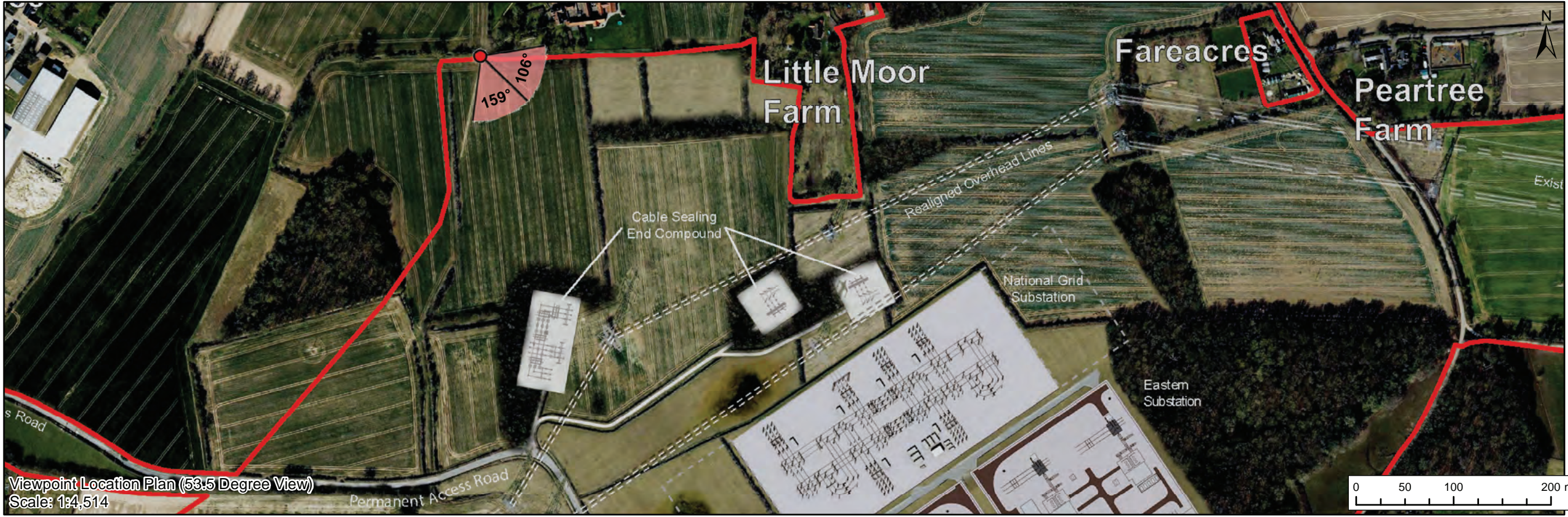
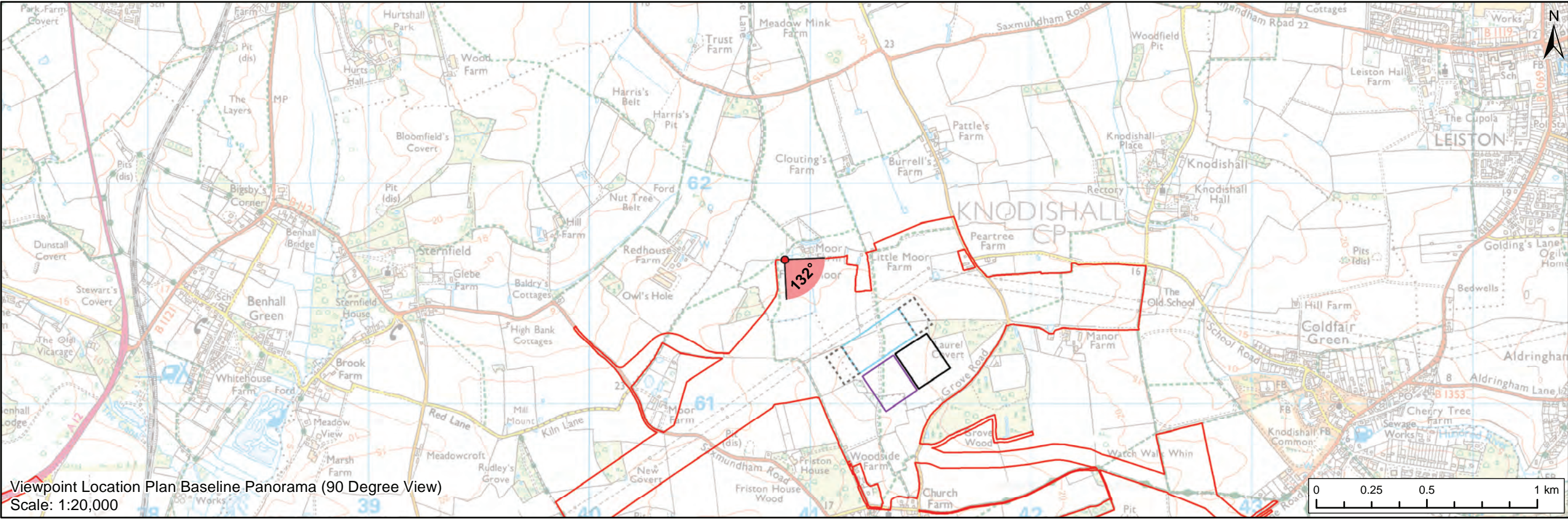
SPR Reference: EA1N_EA2-DWF-ENV-REP-IBR-001031_02

Date: 25th March 2021

Revision: Version 1

Author: ScottishPower Renewables

Applicable to East Anglia ONE North and East Anglia TWO



Legend

- East Anglia ONE North and East Anglia TWO Onshore Development Area
- Western Substation (190m x 170m)
- Eastern Substation (190m x 170m)
- National Grid Substation
- National Grid Extension Bays West and East

Viewpoint:

- 90 Degree Field of View Viewpoint
- 53.5 Degree Field of View Viewpoint



Baseline Photograph (90 Degree Field of View)



				Prepared: LA	Scale @ A3
1	13/01/2021	LA	First Issue (OPEN)	Checked: SM	
Rev	Date	By	Comment	Approved: LT	

Source: © Crown copyright and database rights 2020. Ordnance Survey 100031872.
This map has been produced to the latest known information at the time of issue, and has been produced for your information only.
Please consult with the SPN Onshore GIS team to ensure the content is still current before using the information contained on this map.
To the fullest extent permitted by law, we accept no responsibility or liability (whether in contract, tort (including negligence) or otherwise) in respect of any errors or omissions in the information contained in the map and shall not be liable for any loss, damage or expense caused by such errors or omissions.

East Anglia ONE North and TWO

Viewpoint 5: Public Right of Way, near Moor Farm

(Figure 29.17-Update)		
Rev	1	Coordinate System: BNG
Date	13/01/21	Datum: OSGB36
Figure	29.17a	







Visual representation of 1st year of operational phase
Photomontage of the proposed western substation, eastern substation, National Grid substation and National Grid extension bays west and east

View flat at a comfortable arm's length



Visual representation of 1st year of operational phase
Photomontage of the proposed western substation, eastern substation, National Grid substation and National Grid extension bays west and east

View flat at a comfortable arm's length

OS reference:	640884 E 261654 N	Horizontal field of view:	53.5° (planar projection)	Camera:	Canon EOS 5D Mark II
Eye level:	25 m AOD	Principal viewing distance:	812.5 mm	Lens:	50mm (Canon EF 50mm f/1.4)
Direction of view:	159.15°	Paper size:	841 x 297 mm (half A1)	Camera height:	1.5 m AGL
		Correct printed image size:	820 x 260 mm	Date and time:	22/02/2020, 13:47:28

Contains Ordnance Survey digital data © Crown copyright, All rights reserved 2020 Licence number 0100031673

Figure: 29.17b
Viewpoint 5: Public Right of Way, near Moor Farm



Visual representation of 15th year of operational phase
Photomontage of the proposed western substation, eastern substation, National Grid substation and National Grid extension bays west and east

View flat at a comfortable arm's length

OS reference:	640884 E 261654 N	Horizontal field of view:	53.5° (planar projection)	Camera:	Canon EOS 5D Mark II
Eye level:	25 m AOD	Principal viewing distance:	812.5 mm	Lens:	50mm (Canon EF 50mm f/1.4)
Direction of view:	105.65°	Paper size:	841 x 297 mm (half A1)	Camera height:	1.5 m AGL
		Correct printed image size:	820 x 260 mm	Date and time:	22/02/2020, 13:47:28

Contains Ordnance Survey digital data © Crown copyright, All rights reserved 2020 Licence number 0100031673

Figure: 29.17e
Viewpoint 5: Public Right of Way, near Moor Farm

